

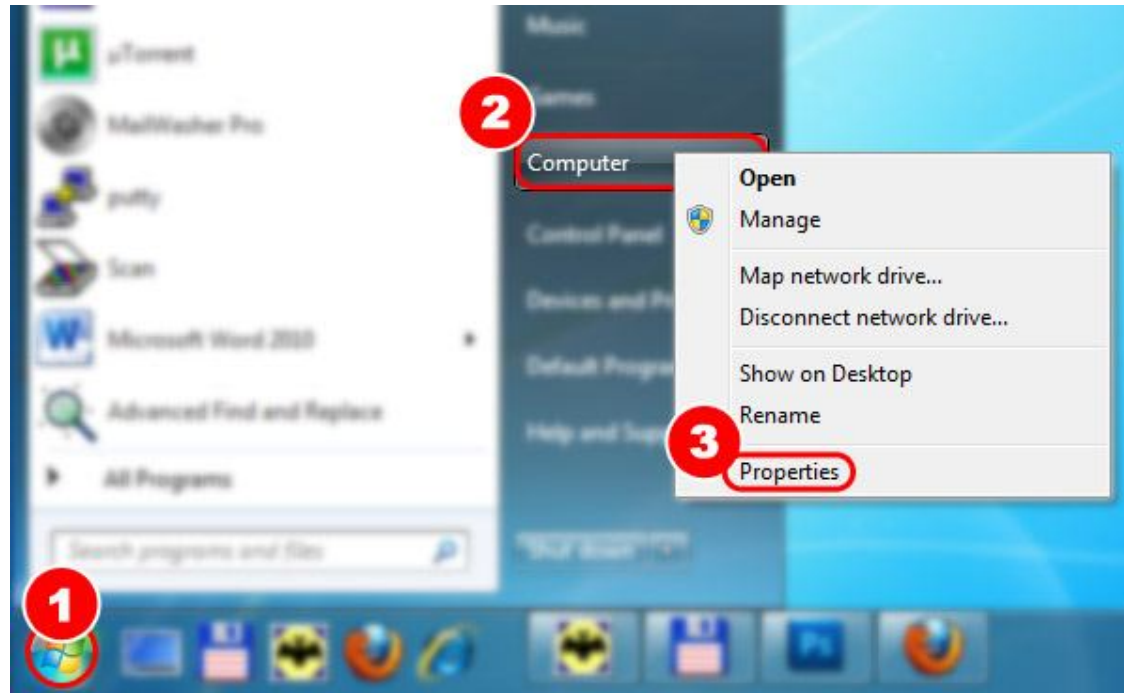


MICRO-BOX

www.micro-box.com

PDF TUTORIAL

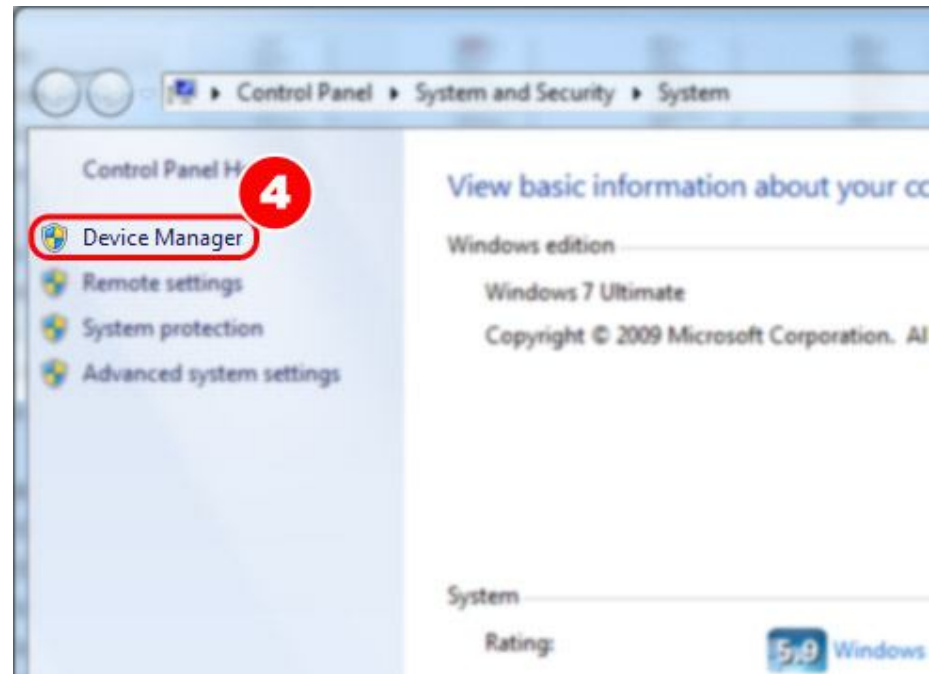
HTC Android Driver installation



STEP 01: Click **START** button

STEP 02: Make right click on options **COMPUTER**

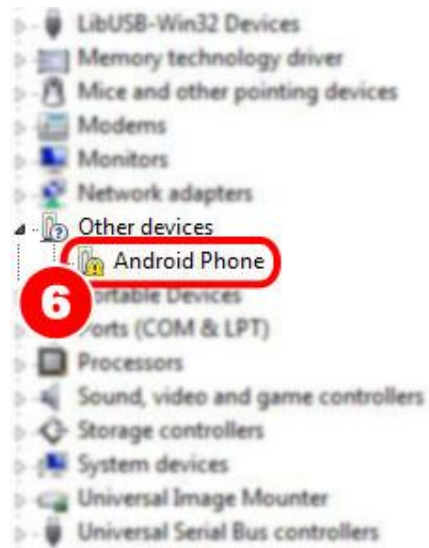
STEP 03: Go to options **PROPERTIES**



STEP 04: Go to options **DEVICE MANAGER**

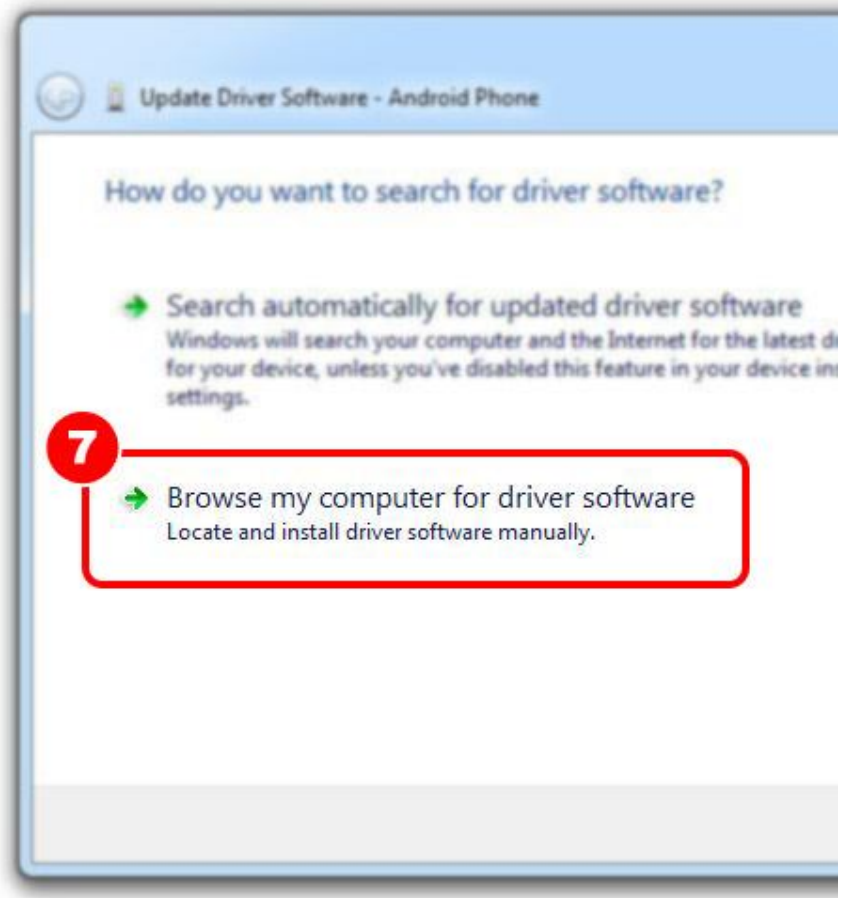


STEP 05: You will see device with name My HTC – **DELETE** this device and scan your system again

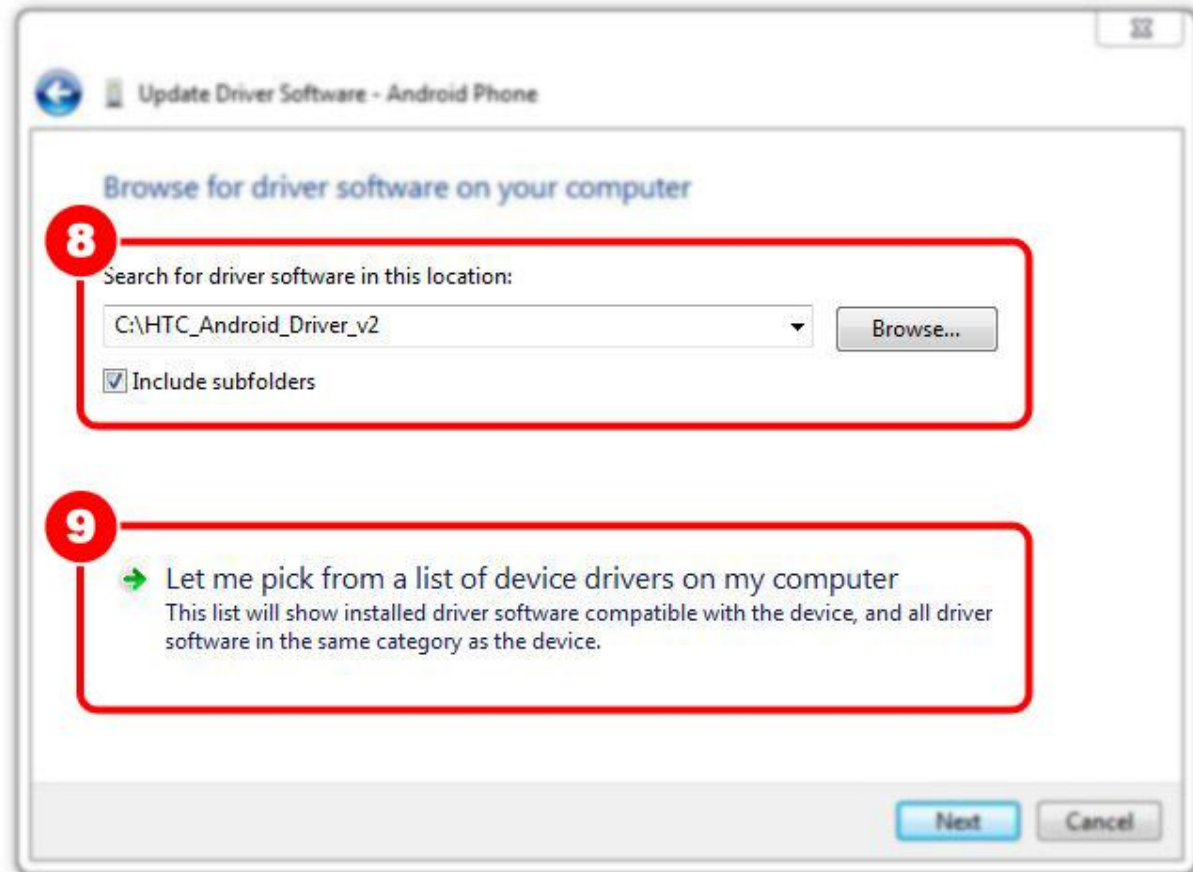


STEP 06: When you scan again your system you will get **Android phone** like on picture, click **UPDATE DRIVER**

- Batteries
- Biometric Devices
- Bluetooth Radios
- Computer
- Disk drives
- Display adapters
- DVD/CD-ROM drives
- Human Interface Devices
- IDE ATA/ATAPI controllers
- Imaging devices
- Intel(R) Centrino(R) WiMAX adapters
- Keyboards
- LibUSB-Win32 Devices
- Memory technology driver
- Mice and other pointing devices
- Modems
- Monitors
- Network adapters
- Other devices
 - Android Phone
- Portable Devices
- Ports (COM & LPT)
- Processors
- Sound, video and game controllers
- Storage controllers
- System devices
- Universal Image Mounter
- Universal Serial Bus controllers
- USB Virtualization

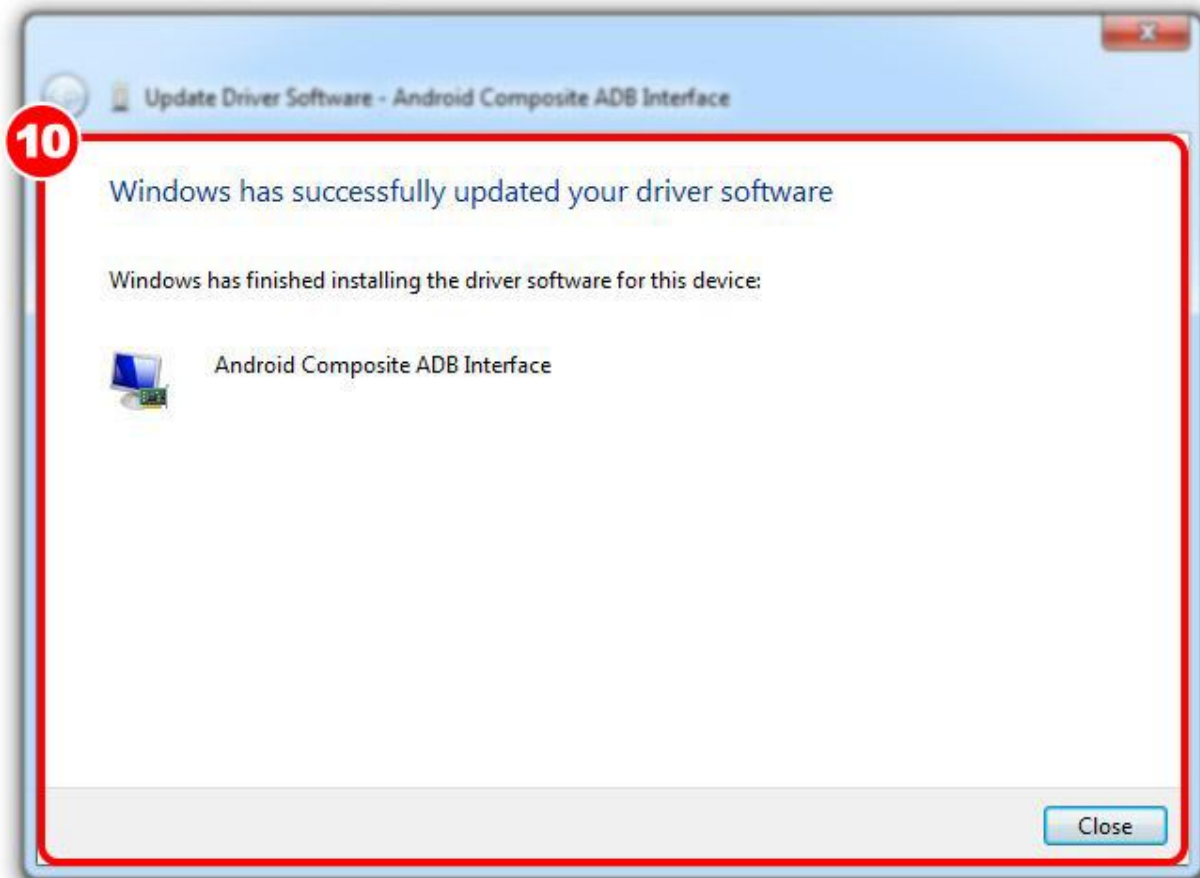


STEP 07: Select option **BROWSE MY COMPUTER FOR DRIVER SOFTWARE**



STEP 08: Browse your computer and find Android drivers you download

STEP 09: Click on options **LET ME PICK FROM A LIST OF DEVICE DRIVERS ON MY COMPUTER**



STEP 10: After these steps you will see windows with message that you successfully updated your driver, click **CLOSE** button and you will see that you have installed your Android phone like on the picture below.

- Android Phone
 - Android Composite ADB Interface
- Batteries
- Biometric Devices
- Bluetooth Radios
- Computer
- Disk drives
- Display adapters
- DVD/CD-ROM drives
- Human Interface Devices
- IDE ATA/ATAPI controllers
- Imaging devices
- Intel(R) Centrino(R) WiMAX adapters
- Keyboards
- LibUSB-Win32 Devices
- Memory technology driver
- Mice and other pointing devices
- Modems
- Monitors
- Network adapters
- Portable Devices
- Ports (COM & LPT)
- Processors
- Sound, video and game controllers
- Storage controllers
- System devices
- Universal Image Mounter
- Universal Serial Bus controllers
- USB Virtualization